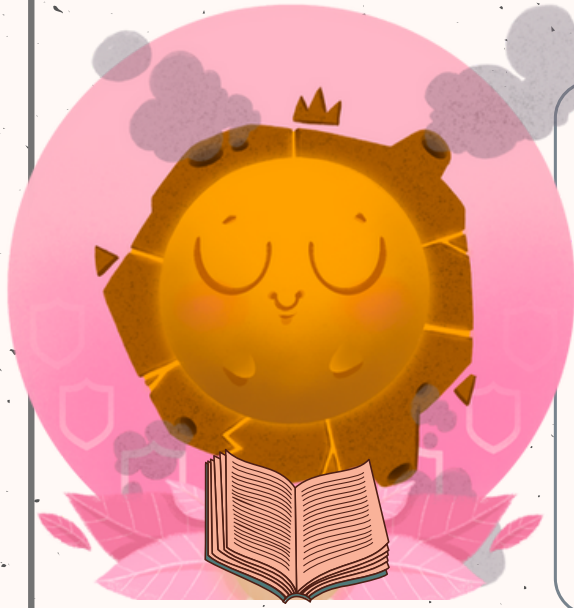


# THE CITY OF POMPEII



KELVIN IS FASCINATED BY THE HISTORY OF POMPEII, THE FAMOUS ROMAN CITY THAT WAS BURIED BY THE VIOLENT ERUPTION OF MOUNT VESUVIUS, WHICH LED TO THE DEATH OF MANY OF ITS INHABITANTS.

THE TONS OF ASH AND LAVA THAT COVERED THE CITY ALLOWED FOR NATURAL CONSERVATION, JUST AS IT WAS LEFT ON THE DAY THE ERUPTION TOOK PLACE.

## ACTIVITIES

*Look for information about Pompeii and answer the following questions:*

- In which year did this tragic event occur?
- Where was the city located?
- What did the archaeologists find when they began to uncover the ruins?
- Imagine the final hours before the volcanic eruption: describe what life would be like in the city, what the inhabitants were doing when the catastrophe took place, what did the survivors do? Do some research so that your story is as historically accurate as possible.